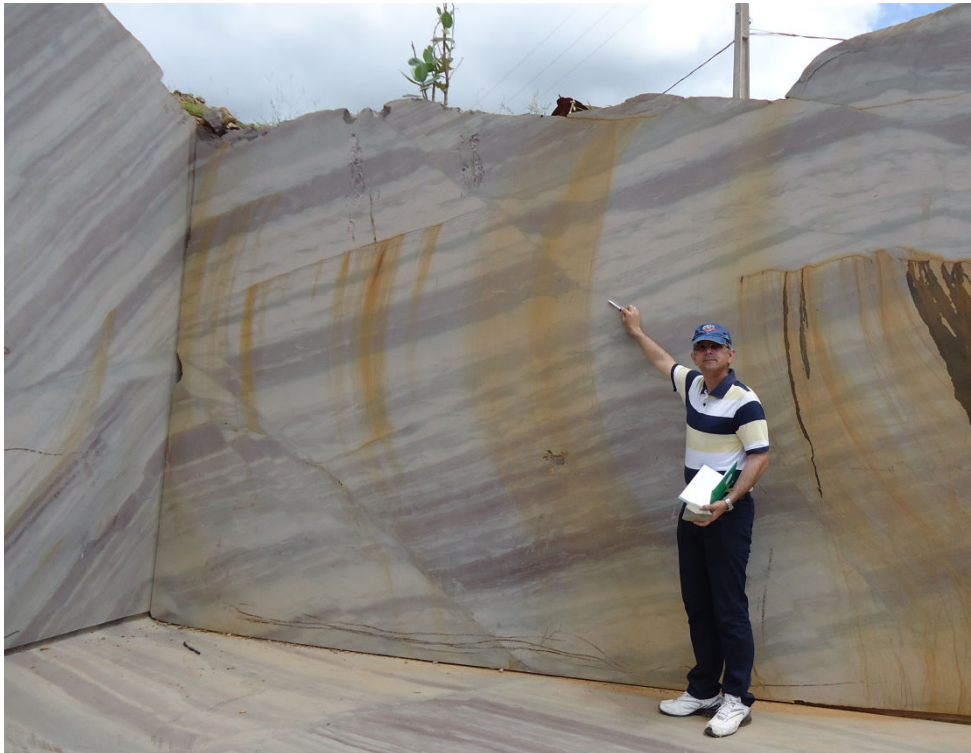


**Sergio Pacheco Neves** (serpane@hotmail.com)



Normal faults, Jaibaras Graben, state of Ceará (2013).

**Master of Science thesis:** Petrologia e Geoquímica dos stocks graníticos de Serrita, Pernambuco (advisor: Prof. A.N. Sial)

Sergio Neves is a full professor at the Department of Geology of the Federal University of Pernambuco, to which he joined in 1988. His main interest areas are the crustal evolution of Precambrian terrains and relationships between tectonic and magmatic processes. These topics are addressed in a multidisciplinary manner, including field and micropetrographic work, anisotropy of magnetic susceptibility, petrology and geochemistry of igneous and metamorphic rocks, U-Pb and Ar-Ar dating, and numerical modeling. His main focus of study is the Borborema Province of Northeast Brazil. The results of his research resulted in the publication of more than thirty scientific articles in international journals, which received over 600 hundred citations in ISI and Scopus.